



# Green Community Hubs

Sam Marine, Project Manager

Rob Noon, Marketing & Communications Lead



# Groundwork Cheshire, Lancashire & Merseyside

- Groundwork is both a charitable trust and a social enterprise that has been working to build more sustainable communities since 1985.
- Our vision is of a society of **sustainable communities** which are **vibrant, healthy and safe**.

## Our services:

- Community engagement and capacity building
- Supporting volunteering and social action
- Environmental education
- Health and wellbeing Hospitals, Social prescribing, Green community projects.



# Northern Network of green community hubs


- Green community hubs are natural outdoor spaces that are activated as a base for community activities. Whatever form they take, they become part of the social infrastructure of a neighborhood or community – the places and spaces that enable social connections to flourish.
- Groundwork Cheshire, Lancashire & Merseyside have supported three hubs for almost 14 years – **Grozone Community Garden** in Northwich, **Grow Speke** in Liverpool and **Grow Blackpool** in Blackpool.
- We used our experience to pilot a model of community support and capacity building between 2022 – 2024, supporting 5 communities across the North to develop their own hubs.
- We didn't do this on our own – we worked in partnership with 4 other Groundwork Trusts across the North of England.
- We were funded by the National Lottery Community Fund for this work – and in July 2024 we got continuation funding for three years (2024 – 2027), to work alongside 30 communities across the North of England.



# Creating a green community hub

Each hub is unique! But here are some of the key things that we think are helpful for developing a Green Community Hub:

- **Community Consultation** - identify the local Change Makers
- Link with authorities: such as the council and police and youth workers.
- Develop **local partnerships**
- Create a steering group – eg, a friends group.
- Develop a group charter or some basic roles/responsibilities for each person.
- **Plan activities with the community** – eg. public open day, activities for children during school holidays, developing a community garden and growing sessions
- **Knowledge sharing** with other hubs – visits and attending other events is crucial
- Collect data! You need to evaluate what you are doing
- Feedback, **consultation** – and the cycle repeats again



“[There has been] a lot of consultation which has been very helpful, it gives a good idea of what local residents are thinking and what the real problems are, as well as what would they like to spend funding on. These open community meetings were really successful.’  
– Friends of Clay Pitts Park member

# Green hubs in Lancashire

## Partnerships and connections

- Clay Pitts Park, Morecambe (Pilot)
- Wigan Cosmos Football Club, Abram (Year 1)
- Westview Community Association, Fleetwood (Year 1)
- Higher Folds, Leigh (Year 2)
- Clifton Hospital, St Annes (Year 2)



COMMUNITY  
SPORTS



THE  
TRIMPEL  
CRICKET  
CLUB





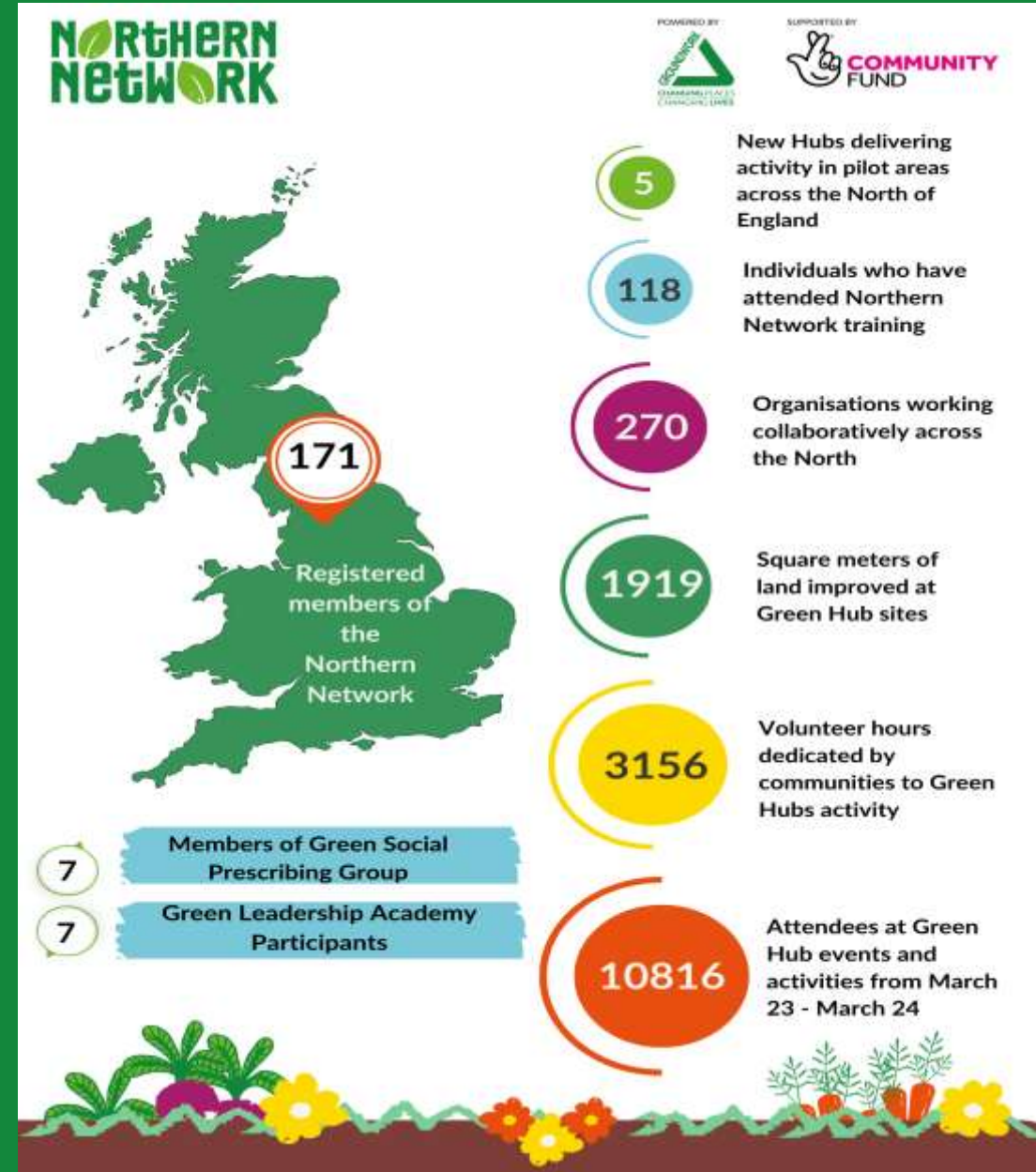
# Pilot Evaluation

“It's like a jigsaw, we're the edges and the Hub and staff are the corners... we're then going to fill it up and you'll have a big project that can keep going.” Hub Facilitator

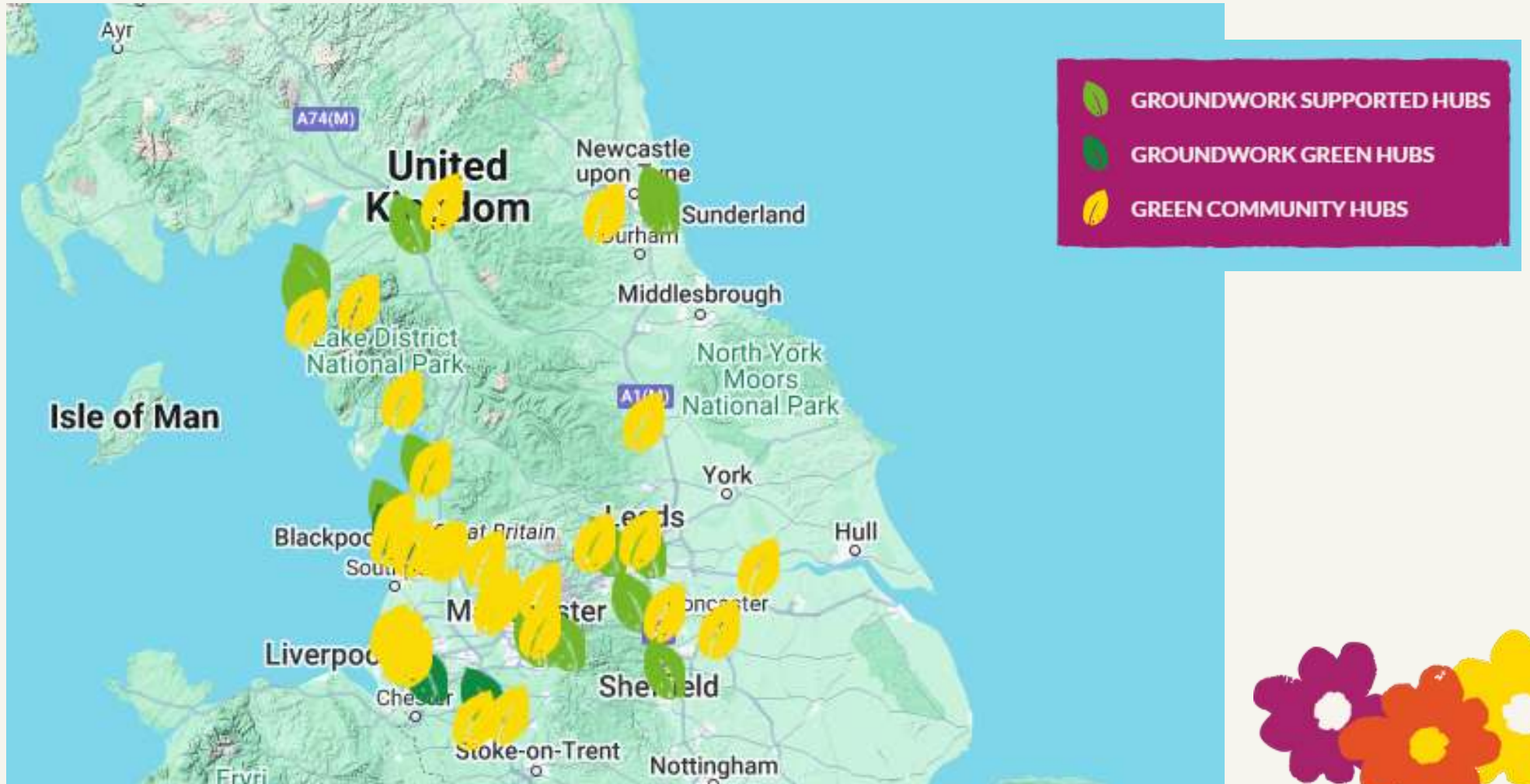
“A feeling that a contribution is being made to improve the town, even an hour litter picking in public places.” Hub Volunteer

“The Northern Network has given us the incentive and drive to look at the neighbourhood and work on it, making it a place safe for children to engage with nature.” Hub Volunteer

“It's time out from a hectic life that doesn't cost anything and you get fresh air. I could spend every day here, it's so peaceful.” Community Member



# Green hubs across the North







**NORTHERN  
NETWORK**

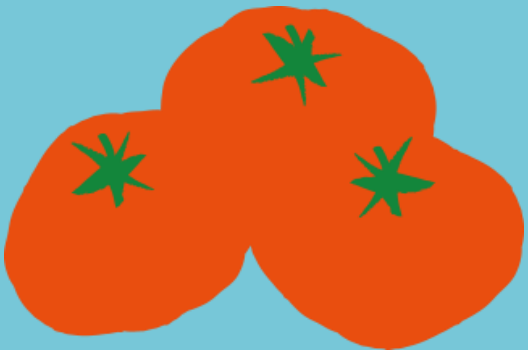
The logo features the words "NORTHERN" and "NETWORK" in a bold, white, sans-serif font, stacked vertically. A green leaf icon is positioned between the two words, partially overlapping the letter 'O' in "NORTHERN" and the letter 'W' in "NETWORK". The logo is centered on a green rectangular background.



# Member benefits

- Online resource hub
- Funding Alerts
- Green Map of the North
- Events
- Hub spotlight feature
- Member-only newsletter

**All for free!**





### MEET THE FRIENDS OF WEST GORTON COMMUNITY PARK

West Gorton Community Park is one of the Northern Network's pilot hubs and our project facilitators have been engaging local residents to help create a sense of ownership.

[READ MORE »](#)



### HOW TO... SET UP A WORM FARM

In support of Plastic Free July, the team at Horton Community Farm were keen to find a use for some of their plastic containers so, with guidance from The Urban Worm, they set about creating a mini worm farm.

[READ MORE »](#)



### WEBINAR: BUILDING A COMMUNITY BUSINESS

In this webinar, Ruth Watson shares her top tips on how to succeed as a social entrepreneur.

[READ MORE »](#)



### GROW & EAT: COURGETTE FRITTERS

Join Angela and the volunteers at Grow Blackpool for a fun 'Grow and Eat!' session as they use produce grown at The Grange to make vegetable fritters and a herb salad.

[READ MORE »](#)



### CASE STUDY: WORM SURVEYS WITH WOODHOUSE GROVE SCHOOL

In this case study, our project facilitator in Yorkshire tells us how she helped a local after-school club carry out a worm survey.

[READ MORE »](#)



### NATIONAL ACADEMY FOR SOCIAL PRESCRIBING: GREEN SOCIAL PRESCRIBING TOOLKIT

The National Academy for Social Prescribing have released a new toolkit for anyone who has a role in developing green social prescribing in their area.

[READ MORE »](#)

# How can I get involved?

**Become a  
member**

**Hub spotlights**

**Spring/Summer  
2025 events**

**... you tell us!**





# Dig in!

[www.northernnetwork.org](http://www.northernnetwork.org)

[northernnetwork@groundwork.org.uk](mailto:northernnetwork@groundwork.org.uk)

Find us on Facebook, Instagram & Bluesky

